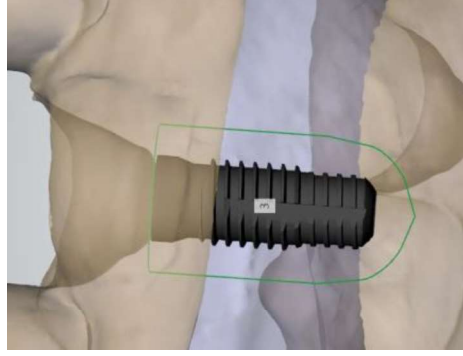


3Shape's Global Coordinate System

The **Global Coordinate System** is defined to ensure compatibility of implant libraries in Dental System™ and between Dental System™, Implant Studio™ and TRIOS® applications.

Positioning the implant in conformity with this requirement is especially critical for compatibility between Dental System™ and Implant Studio™ libraries.

Implant Studio™



Dental System™



Global Coordinate System ensures that the implant position is correctly transferred from one application to another one.